

### Axial Fans



#### A6/G

Axial fans with six aluminium blades impeller with electric motor fixed on basket protection Grid.

#### A6/N-A6/R

Axial fans with six aluminium blades impeller with electric motor fixed on protection grid coupled to painted steel conveyor.



#### A6/S-N – A6/S-R

Axial fans with six aluminium blades impeller with electric motor fixed on protection grid coupled to painted steel conveyor and square panel.



#### D/ER – T/ER

Ducted axial fans with impeller with winged profile blades made in die-cast aluminium or in composite plastic material coupled directly or by transmission to the electric motor.



#### SA – SAs

Axial fans with frame made in galvanized steel sheet and impeller with special self cleaning

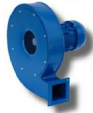
profile blades coupled by transmission to the electric motor, available with or without shutter.

### Centrifugal Fans



#### CP

Centrifugal fans made in plastic material with curved backward blades impeller for low pressure and corrosive air.



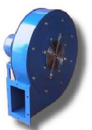
#### CPF

Centrifugal fans with curved forward blades impeller for low-medium pressure and clean air.



#### CPS/E – F – G

Centrifugal fans with curved forward blades impeller for high pressure and dusty air.



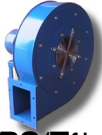
#### CPS/R

Centrifugal fans with curved backward blades impeller for medium pressure and air with materials in suspension - high efficiency.



#### CPS/RF-RG-RH-RI-RL

Centrifugal fans with curved backward blades impeller for high pressure and dusty air - high efficiency.



**DTA** Centrifugal fans with curved high efficiency blades impeller for medium pressure and air with



**DTF** Centrifugal fans with curved forward blades impeller for low pressure and clean air.



**DTA** Centrifugal fans with open blades impeller for low-medium pressure and transportation of materials.



**DTA** Centrifugal fans with curved high efficiency blades impeller for medium pressure and air with



**DTA** Centrifugal fans with open blades impeller for low-medium pressure and air with granulated and



**DTA** Centrifugal fans with open blades impeller for high pressure and transportation of materials.



**DTA** Centrifugal fans with curved high efficiency blades impeller for medium pressure and air with



**DTA** Centrifugal fans with curved forward blades impeller for low pressure and clean air.



Aromatic (Thailand) Co., Ltd.  
(662) 281 2711-2  
Contact Us